

# Macadamia felted coccid surveillance in Mpumalanga and KwaZulu-Natal

## Problem

- The macadamia felted coccid was first identified in South Africa in 2017 and has caused significant damage in the Hawaiian macadamia industry, where it has spread throughout the South Kona island in five years.
- It is not known how far the macadamia felted coccid has spread in South Africa since the first reports in 2017.

## Aims

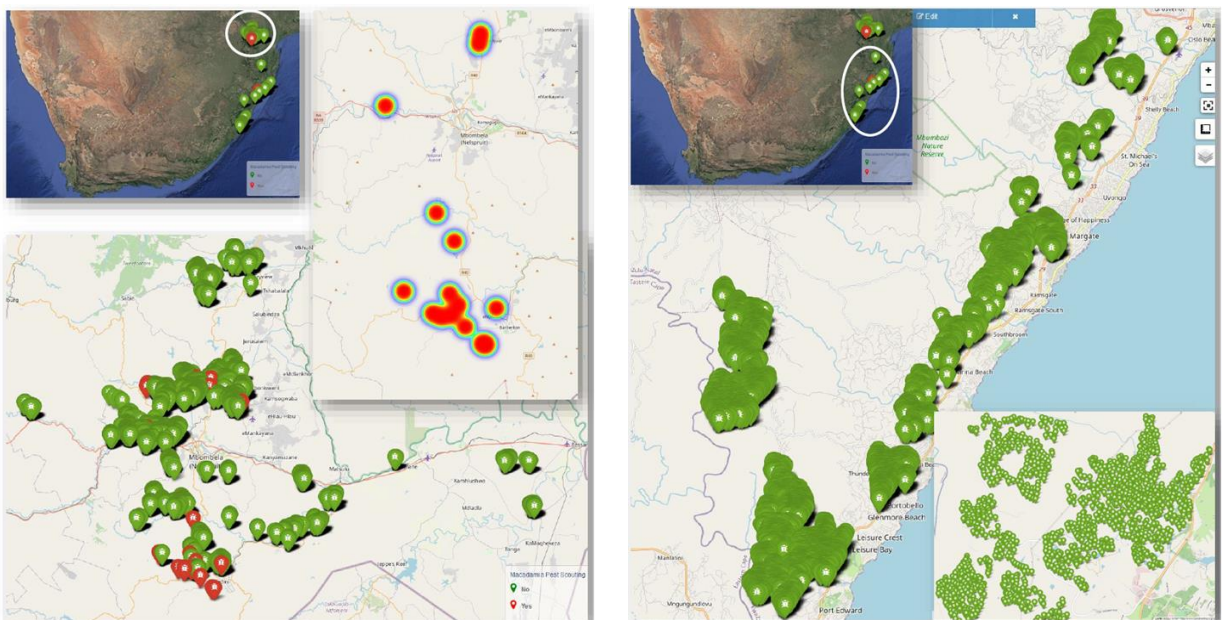
- To determine the incidence and spread of the macadamia felted coccid on farms and in nurseries in Mpumalanga and KwaZulu-Natal from which confirmed reports of macadamia felted coccid infestations has been received.

## Results

- 243 farms and 7 953.6 hectares were inspected.
- The macadamia felted coccid was present on 23 farms and absent on 220 farms.
- 19 commercial nurseries and 13 grower nurseries were inspected, and the macadamia felted coccid was not present in any commercial or grower nurseries.

## What does this mean?

- The macadamia felted coccid has not spread uncontrollably from sites where SAMAC were aware of infestations.
- Surveillance activities will be re-instated if needed based on continuing monitoring by Dr Schalk Schoeman.



Macadamias South Africa NPC

SAMAC  
Macadamias South Africa NPC

Macadamia First. Quality Always